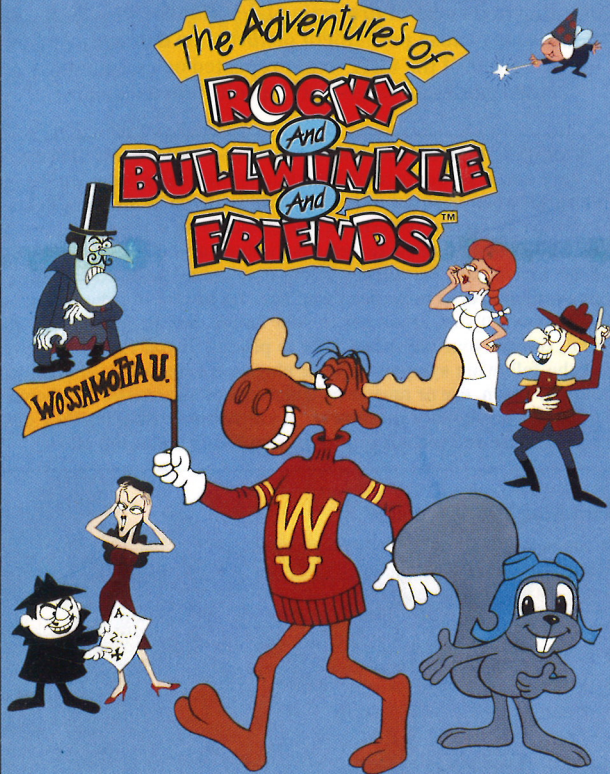


The Adventures of  
**ROCKY**  
And  
**BULLWINKLE**  
And  
**FRIENDS**™



# Instruction Manual



ABSOLUTE™

.....

**Warning to owners of projection televisions: Still pictures or images may cause permanent picture-tube damage or mark the phosphor of the CRT. Avoid repeated or extended use of video games on large-screen projection televisions.**

**WARNING: READ BEFORE USING YOUR SEGA VIDEO GAME SYSTEM.**

A very small percentage of individuals may experience epileptic seizures when exposed to certain light patterns or flashing lights. Exposure to certain patterns or backgrounds on a television screen or while playing video games may induce an epileptic seizure in these individuals. Certain conditions may induce undetected epileptic symptoms even in persons who have no history of prior seizures or epilepsy. If you, or anyone in your family, has an epileptic condition, consult your physician prior to playing. If you experience any of the following symptoms while playing a video game—dizziness, altered vision, eye or muscle twitches, loss of awareness, disorientation, any involuntary movement, or convulsions—IMMEDIATELY discontinue use and consult your physician before resuming play.

### Handling Your Cartridge

- The Sega Genesis Cartridge is intended for use solely with the Sega™ Genesis™ System.
- Do not bend it, crush it, or submerge it in liquids.
- Do not leave it in direct sunlight or near a radiator or other source of heat.
- Be sure to take an occasional recess during extended play, to rest yourself and the Sega Cartridge.



This official seal is your assurance that this product meets the highest quality standards of SEGA™. Buy games and accessories with this seal to be sure that they are compatible with the SEGA™ GENESIS™ SYSTEM.



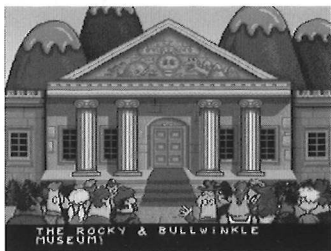
**ABSOLUTE™**

# Table of Contents

Wossamottá U?	4
What Are You Waiting For?	5
So Many Options, So Little Time	6
What Moves You?	7
Whose Life Is It, Anyway?	8-9
Old Friends, New Mini-Games	10
A Few Good Moose Hints	12
We're Bad, We're Bad!	13

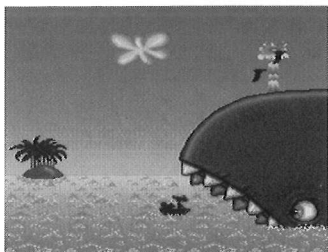


# Wossamotta U.?



Our story begins at the celebrated opening of the Rocky & Bullwinkle Museum in beautiful downtown Frostbite Falls where a mystery is brewing. The fabled treasures Rocky and Bullwinkle have collected on their many exploits have been purloined by those Pottsylvania super-spies and all-around no-goodniks, Boris Badenov and Natasha Fatale!

Now it's up to the dynamic moose and squirrel to once again find their incredible valuables. Join Bullwinkle as he attempts to scale his way up to the treacherous Whynchutaka Peak, delves deep into the dark depths of the gravity-defying Upsidasium Mines, and even explores the belly of the mechanical whale, Maybe Dick!



Rocky picks up the action on the tough waterfront docks, mean city streets, and chamber of horrors of that spy capital of the world—Pottsylvania! Throughout, our heroes have to stay on their toes to nab those bomb-throwing bad guys and other assorted nasties in order to bring back the loot!



.....

# What Are You Waiting For?

1. Make sure the power switch of your Sega Genesis unit is **OFF**.
2. Insert the **ROCKY & BULLWINKLE & FRIENDS™** cartridge into the Genesis unit as described in your Genesis instruction manual.
3. Turn the power switch **ON**. If nothing appears on the screen, turn the power switch **OFF**, remove the cartridge, and try again.
4. A brief movie sequence of company logos will appear, followed by the Title Screen.
5. **TO START:** Push the **START BUTTON** on the game controller.

After the title screens advance, you'll see the story unfold. If you wish to bypass the opening sequence, press the **START BUTTON**.



---

# So Many Options, So Little Time

After the introductory sequence is complete, the Options Screen appears. Here you have a choice of beginning the main game right away (the Rocky & Bullwinkle picture), or playing one of the two mini-games: Dudley Do-Right or Sherman & Peabody.

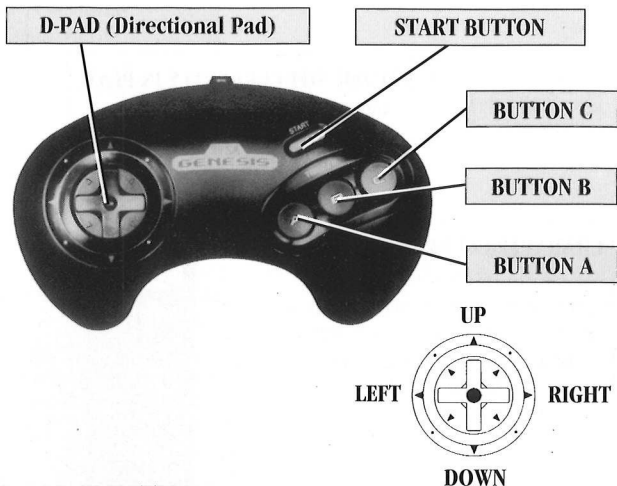
The mini-games can give you an extra life if you play them right. See pages 10 and 11 to learn how.

Use the **D-PAD** to point the Selector Arrow at your choice; then press **BUTTON A, B, or C** to get to it. You have three chances to win a mini-game. The first two times you lose, you'll return to the Options Screen. Lose a third time, and you'll automatically go into the main game. You don't have to play the same mini-game each time—if you lose Dudley, it's okay to try your hand at Sherman & Peabody and switch again after that if you want.

The game begins with Bullwinkle's perilous ascent of Whynchutaka Peak. Remember, Boris and Natasha will stop at nothing to keep their goodies, so be careful!

# What Moves You?

Listed below are the game's controller functions. Take the time to master the character movements so you can thwart the evil schemes of Boris and Natasha.



## D-PAD FUNCTIONS

- Left/Right:** Moves characters left or right.  
Acts as Brake/Accelerator in Bullwinkle's mine car ride.
- Up:** Makes Bullwinkle climb up cliffs.  
Makes Rocky enter doors and secret passages.
- Down:** Makes characters "duck" down.  
Makes Bullwinkle climb down cliffs.
- Start Button:** Pauses/unpauses game play.  
Bypasses the movie and text sequences.
- Button A:** Makes both characters jump.
- Button B:** Makes Rocky throw collected acorns.  
Makes Bullwinkle throw collected mooseberries.
- Button C:** Makes Rocky do a tail spin.  
Makes Bullwinkle head butt.
- Buttons A, B, or C:** Advance through full-screen text.

# Whose Life Is It, Anyway?

Each game play screen contains what we in the video game business like to refer to as

## CHARACTER NOT CURRENTLY IN PLAY

Always appears without color.

Each time  
damaged  
Collect u

## CHARACTER CURRENTLY IN PLAY

Always shown in color.

The more damage the character takes,  
the less "lively" his picture will appear.

Grab as many Daisies as you can  
to perk our heroes up.

## NUMBER OF PENNANTS COLLECTED

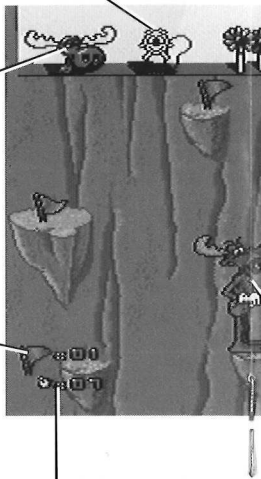
15 pennants=1 Life.

## NUMBER OF SHOTS AVAILABLE TO TOSS AT ENEMIES

Collect Mooseberries for Bullwinkle.

Collect Acorns for Rocky.

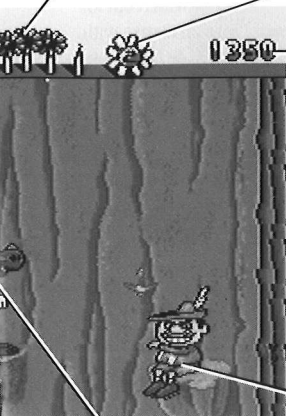
Both can be picked up individually or in bunches.



as Status Areas. The screen below shows you what's what, how, and why.

**ENERGY DAISIES**  
Five Daisies=1 Life.  
When the character takes a hit of  
damage, a Daisy falls off its stem.  
As many as you can to give our  
heroes extra energy.

**NUMBER OF LIVES REMAINING**  
You start the game with 3 lives:  
the one you're in, plus 2 more.



**SCORE**

**POORLY DISGUISED BAD GUY**

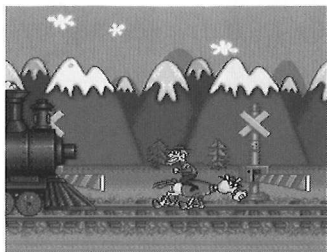
**OUR HERO**

# Old Friends, New Mini-Games

As we mentioned back on page 6 in the *Options Screen* section, some of our heroes' old friends appear to break up the action of the game and steal a little attention. The aforementioned Options Screen appears at the beginning of the game, and also between the Whynchutaka Peak and Maybe Dick sections, and Maybe Dick and Pottsylvania. You don't have to play them, but it's worth a try to get that extra life.

Join Dudley Do-Right of the Mounties for a death-defying race to save the lovely Nell Fenwick from the machinations of the evil Snidely Whiplash. Dodge obstacles on railroad tracks as you and your horse (affectionately known as "Horse"), are chased by a locomotive piloted by the fiendish villain.

Speed up to stay ahead of the relentless smoke-spewer, but watch out for obstacles that you have to leap over or duck under. Stay on course with Horse until you reach the fair lady in distress (or dat dress, de blue dress—whatever she's wearing...).



## DUDLEY'S CONTROLS

- |                            |   |
|----------------------------|---|
| <b>D-Pad Left:</b>         | Slows down Dudley and Horse.  |
| <b>D-Pad Right:</b>        | Keeps Dudley and Horse at maximum speed.  |
| <b>D-Pad Down:</b>         | Makes Dudley duck under water tower spigots and tree limbs.                                       |
| <b>Start Button:</b>       | Pauses/unpauses during game play.   |
| <b>Buttons A, B, or C:</b> | Make Dudley and Horse jump over gaps in the tracks, railroad crossing gates, and fallen branches. |



.....

The smartest canine in the world, Mr. Peabody, and his loyal boy, Sherman, also make a cameo appearance with their patented time-traveling Way Back™ machine. Sherman must dodge fire and brimstone from the mouth of a medieval dragon (and the ground fires, too), while trying to catch the bubble gum Peabody's tossing to him (just get Sherman to touch the gum and he's got it). Then Sherman's got to blow bubbles and aim them at the dragon's mouth. When he scores a hit, the monster's maw will start to clog up. Three bubble hits and he's history. Five hits on Sherman and your plan goes up in smoke.



### SHERMAN'S CONTROLS

- D-Pad Left/Right:** Moves Sherman left or right.
- Start Button:** Pauses/unpauses during game play.
- Button A:** Makes Sherman jump.
- Button B:** Makes Sherman blow a bubble and release it.



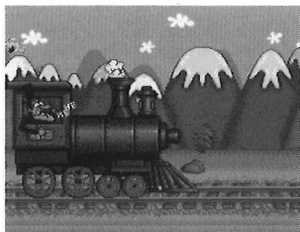
# A Few Good Moose-Hints



- Many things in the background are capable of supporting the weight of a full-grown moose and hearty squirrel. For instance, pipes, window sills, boxes, and manhole covers—among other things.
- Head butts and tail spins are only effective on ground-based enemies. Don't waste our heroes' valuable time on anything else.
- While mountain climbing, explore the ledges instead of going straight up. You never know what useful stuff you'll find.
- Ride the mine car down into the mine shaft until you see the next one appear. Then jump into it before it's too late!
- While inside Maybe Dick the mechanical whale, don't stay on the barrels too long or you'll sink.

# We're Bad, We're Bad!

Shown below are a few of the villainous types that appear in this game.



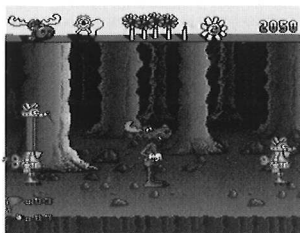
**Snidely Whiplash**



**Boris Badenov**



**Natasha Fatale**



**Metal-Munching Moon Mice**



**Fearless Leader**

# Absolute Entertainment, Inc.'s Limited 90-Day Warranty

Absolute Entertainment, Inc. warrants to the original retail purchaser of this video game computer program ("Program") that the Cartridge ("Cartridge") on which the Program is embodied will be free from defects in materials and workmanship for a period of ninety (90) days from the day of purchase. If your Cartridge becomes defective during that period, Absolute Entertainment, Inc. will replace it free of charge.

To replace a defective Cartridge during the warranty period, mail the entire Cartridge, proof of your purchase with the purchase date circled, a brief statement describing the defect, and a large, self-addressed stamped envelope to:

Warranty Officer  
Absolute Entertainment, Inc.  
10 Mountainview Road, Suite 300 South  
Upper Saddle River, New Jersey 07458  
Tel: (201) 818-4800

If your Cartridge fails after the end of the 90-day warranty period, you may return it to Absolute Entertainment, Inc. at the address above along with a check or money order for \$25.00, a brief statement describing the defect, and a large self-addressed stamped envelope. This offer to repair or replace defective Cartridges after the end of the 90-day warranty period may be withdrawn at any time without notice.

We recommend that defective Cartridges be packaged carefully and sent certified mail, return receipt requested. Absolute Entertainment, Inc. will not be responsible for replacing defective Cartridges until they have been received by us at the above address.

This warranty is limited to the Cartridge as originally supplied by Absolute Entertainment, Inc. and is not applicable to the Program embodied on the Cartridge. This warranty will not be honored if the defect has arisen through abuse, mistreatment, improper care of the Cartridge, neglect, or normal wear and tear.

THIS WARRANTY IS IN LIEU OF ALL OTHER WARRANTIES, WHETHER ORAL OR WRITTEN, EXPRESS OR IMPLIED, INCLUDING ANY WARRANTY OF MERCHANTABILITY OR FITNESS FOR A PARTICULAR PURPOSE, AND NO OTHER REPRESENTATIVES OR CLAIMS OF ANY NATURE WILL BE BINDING ON OR OBLIGATE ABSOLUTE ENTERTAINMENT, INC. IN NO EVENT WILL ABSOLUTE ENTERTAINMENT, INC. BE LIABLE FOR SPECIAL, INCIDENTAL, OR CONSEQUENTIAL DAMAGES RESULTING FROM POSSESSION, USE OR MALFUNCTION OF THIS CARTRIDGE OR PROGRAM, INCLUDING DAMAGE TO PROPERTY, AND TO THE EXTENT PERMITTED UNDER THE LAW, DAMAGES FOR PERSONAL INJURY, EVEN IF ABSOLUTE ENTERTAINMENT, INC. HAS BEEN PREVIOUSLY ADVISED OF THE POSSIBILITY OF SUCH DAMAGES.

THE PROGRAM IS SOLD "AS-IS" AND NO WARRANTIES EXPRESS OR IMPLIED, INCLUDING WARRANTIES FOR MERCHANTABILITY OR FITNESS OR PURPOSE, WILL BE APPLICABLE.

SOME STATES DO NOT ALLOW LIMITATIONS ON HOW LONG AN IMPLIED WARRANTY LASTS AND/OR THE EXCLUSION OR LIMITATION OF INCIDENTAL OR CONSEQUENTIAL DAMAGES. SO THE ABOVE LIMITATIONS AND/OR EXCLUSION OR LIMITATION OF LIABILITY MAY NOT APPLY TO YOU. THIS WARRANTY GIVES YOU SPECIAL LEGAL RIGHTS, AND YOU MAY HAVE OTHER RIGHTS WHICH VARY FROM STATE TO STATE.

**HAVING TROUBLE FINDING OUR GAMES?  
THEN CALL OUR TOLL-FREE NUMBER TO ORDER DIRECTLY:**

**1-800-237-8400**

**ASK FOR EXTENSION 201**

(VISA and MASTERCARD accepted. A postage and handling charge of \$4.00 will be added to each order. New Jersey residents add 6% sales tax.)

**PLEASE NOTE THAT THIS NUMBER IS FOR ORDERS ONLY. IT IS NOT  
EQUIPPED TO HANDLE GAME PLAY COUNSELING QUESTIONS.**



# CREDITS

## Concept and Design

Barry Marx  
Bruce Plotnick  
Glen A. Schofield  
Gregory A. Faccone  
Tak Lau  
Dan Kitchen

## Creative Director

W. Marshall Rogers

## Programming

Bruce Plotnick  
Dennis Benson

## Technical Director

Roger Booth

## Graphics

Ross Harris  
John-Marc Grob

## Art Director

Glen A. Schofield

## Music, Sound Effects, and Audio Direction

Mark Van Hecke

## Audio Engineer

Jim Wallace

## Producer

Dan Kitchen

## Special Thanks To:

Tak Lau  
Joseph A. Moses  
Herve Marcel  
Gregory A. Faccone  
Amy Bond  
Jennifer L. MacDonald  
Ray Bradley



THE ADVENTURES OF ROCKY  
AND BULLWINKLE AND FRIENDS™  
GENESIS™ PROOF OF PURCHASE

Patents: U.S. Nos. 4, 442, 486/4, 454, 594/4, 462, 076; Europe No. 80244; Canada No. 1,183,276; Hong Kong No. 88-4302; Singapore No. 88-155; Japan No. 82-205605 (Pending).



# MORE GREAT GAMES FROM ABSOLUTE!

## R.C. Grand Prix™

Rev up your motors, hit the dirt, and become World Champion Remote Control Racer!

*Designed by Scott Marshall and Dan Kitchen.*

GAME GEAR™



SEGA  
GENESIS  
16-BIT CARTRIDGE

## Toys™

"Toy-minate" the enemy as you battle for control of the Zevo Toy factory against the warlike toys of the evil General Zevo! Command hundreds of Good Toys—each with their own special actions—that can hold their own against the toughest of Bad Toys. With incredibly-animated allies like the spring-attack Jack-in-the-Boxes and rapid-fire Peanut Guns, you're ready to take on anything the General can throw at you!

*Based on the film directed by Academy Award-winner Barry Levinson!*

TM & © 1992 TCFFC.

Garry Kitchen's

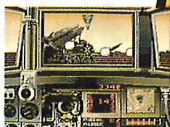
## Super Battletank: War in the Gulf™

One of the most realistic, authentic military game-playing experiences ever! State-of-the-art M1A1 weaponry, a first-person out-of-tank view, searing sound effects, and spectacular graphics make you feel you're right at the core of the Persian Gulf War!

*Designed by Garry Kitchen.*

*Genesis program by Mark Morris.*

SEGA  
GENESIS  
16-BIT CARTRIDGE



LICENSED BY SEGA ENTERPRISES LTD. FOR PLAY ON THE SEGA™ GENESIS™ SYSTEM. SEGA AND GENESIS ARE TRADEMARKS OF SEGA ENTERPRISES LTD. The Adventures of Rocky & Bullwinkle & Friends™ & ©1991 Ward Productions, Inc. All Rights Reserved. Licensed by MCA/Universal Merchandising, Inc. Published by Absolute Entertainment, Inc., 10 Mountainview Road, Suite 300 South, Upper Saddle River, NJ 07458. Absolute Entertainment is a registered trademark of Absolute Entertainment, Inc. All Rights Reserved. © 1993 Absolute Entertainment, Inc. All Rights Reserved. Printed in Japan.